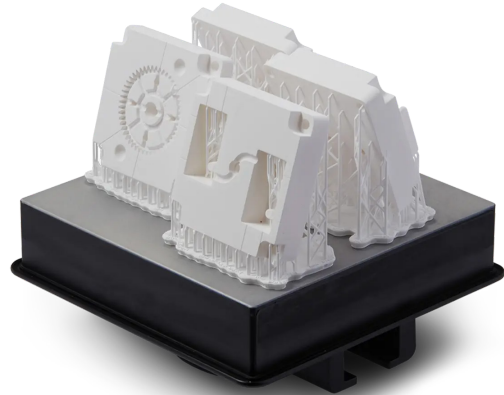
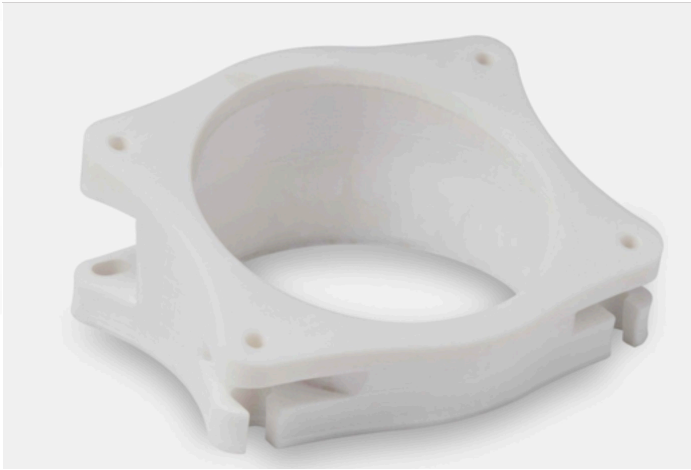


# Rigid 10K

Technology: **DLP**

COLOR OPTIONS:  White



## APPLICATIONS:

- Short-run injection molds and inserts
- Heat-resistant and fluid-exposed components, jigs, and fixtures
- Aerodynamic test models

## DESCRIPTION:

This highly glass-filled resin is the stiffest material in our engineering portfolio. Choose Rigid 10K Resin for precise industrial parts that need to withstand significant load without bending. Rigid 10K Resin has a smooth matte finish and is highly resistant to heat and chemicals.

## FEATURES:

Simulates stiffness of glass and fiber-filled thermoplastics

## TECHNICAL DATA

PROPERTY	ASTM	METRIC UNITS
Tensile Strength	D638M	65 MPa
Modulus of Elasticity, Youngs Modulus	D638M	10 GPa
Elongation Break (%)	D638M	1 %
Flexural Strength	D790M	126 MPa
Flexural Modulus	D790M	9 GPa
IZOD Impact Strength (notched)	D256A	47 J/m
Heat Deflection Temperature @ 0.45 MPa/66 psi, (°C)	D648	163 °C